

8616D Asphalt Paver

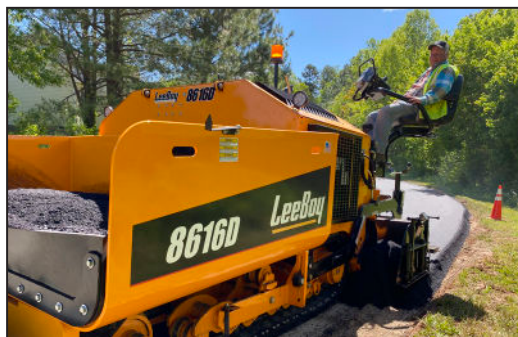
LeeBoy®



Performance Features:

The 8616D Asphalt Paver encompasses many features of a larger highway-class paver yet maintains a sleek footprint to better suit the commercial contractor looking for a heavier unit. Highly adaptable for heavy commercial jobs, the flexible spontaneous design gives the operator the ability to switch the unit from high deck to low deck in the matter of minutes. There's nothing left to desire as this unit provides greater serviceability with easy to locate components, consistent material flow and the Legend HD PRO Screed for higher production yields.

- 127 hp (95 kW) Kubota Tier 4 Final Diesel Engine
- Legend HD PRO Screed, Weight 4,150 lbs
- Paving Widths Variable Up To 15' 6"
- 9 Ton Capacity Material Hopper
- Operator's Choice of High or Low Deck Configuration
- Remote Mounted SCR for Greater Visibility
- Dual Electronic Steering & Adjustable Operator Platforms
- Two 20.5" Feeding Conveyors
- Automatic Temperature Control (ATC) Standard
- Electric Screed Heat, 14.4 kw Generator
- Actuator Driven Hood Lift to Aid in Maintenance



8616D Asphalt Paver Specifications



Dimensions	<ul style="list-style-type: none"> - Length: 16' 4" - Width: 8' 6" transport 10' hopper wings down - Height: Low Deck: 6' 8" High Deck: 7' 10" - Total Weight: 23,450 lbs. 	Operator's Controls	<ul style="list-style-type: none"> - Dual adjustable, independent control stations - Colored LED, sunlight viewable control screens with digital readouts
Engine	<ul style="list-style-type: none"> - Kubota turbocharged diesel, Tier 4 Final – 127 hp (95 kW) 	Steering	<ul style="list-style-type: none"> - Dual electronic steering controls - Electronically controlled pumps operated by the forward/reverse joysticks
Capacities	<ul style="list-style-type: none"> - Fuel: 37 gallons - Hydraulic reservoir: 31 gallons - Washdown tank: 7 gallons - DEF tank: 5 gallons 	Washdown System	<ul style="list-style-type: none"> - Electric HD pump with hose and two hose reels
Hopper	<ul style="list-style-type: none"> - Hopper size: 9 ton 	Push Rollers	<ul style="list-style-type: none"> - Two rollers with sealed bearings mounted to allow pivoting on frame, built in material scrapers - Vertically adjustable oscillating push rollers
Paving Widths	<ul style="list-style-type: none"> - Variable up to 15' 6" 	Track Drive System	<ul style="list-style-type: none"> - Hydrostatically powered, self-cleaning crawler type - Track size: 14" w x 108" long poly - Paving speed: 0 to 125' per minute (1.4 mph) - Travel speed: 0 to 350' per minute (3.9 mph)
Paving Depths	<ul style="list-style-type: none"> - Manual flight screws positioned on the screed to control material thickness, depth: 0" to 8" 	Additional Standard Equipment	<ul style="list-style-type: none"> - Gauge package - Actuator-driven hood lift - LED beacon light - LED work light package - Integrated tool boxes - Vandalism protection covers - 2 Year Standard Product Warranty
Screed	<ul style="list-style-type: none"> - Legend HD PRO Screed, free floating - Weight: 4,150 lbs - Consisting of a main screed and two hydraulically operated screed extensions - Spring-loaded end gates standard - Hydraulic sloping screed extensions standard - Equipped with two electric vibrators, 4100 RPM 	Optional Equipment	<ul style="list-style-type: none"> - Smooth Ride HD poly pad track - Screed extension vibration - Heated endgates - Slope meter - 3:1 flight screw adjusters - Horizontal flight screw adjusters - Truck hitch - Hydraulically extendable oscillating push roller - Central point lube system, screed - Steering knob drive controls (in lieu of joysticks) - Power crown - Wiring only, grade controls (TopCon) - Sonic grade control, one side (TopCon) - Dual grade control (TopCon) - Dual grade and slope (TopCon) - 12" x 6" Berm extension (LH & RH) - LED Blade light system - Umbrella Mounts (x2) - Other options available, visit LeeBoy.com
Screed Heat	<ul style="list-style-type: none"> - Legend electric screed heat, 14.4 kw generator - Electric timer and automatic temperature control - Sealed s-curve elements in main screed and sealed blade-style elements in extensions 		
Screed Crown/Valley	<ul style="list-style-type: none"> - Equipped with a crown/invert adjustment - Includes a levelling indicator for the operator 		
Material Handling	<ul style="list-style-type: none"> - Two hydraulically operated under auger material cutoffs can be set to close in reverse - Single point lube system - Two 12" independent hydraulically operated cast augers 		
Operator's Platform	<ul style="list-style-type: none"> - Full machine width platform, slide out extensions - Pivoting, swing out seats and control panels 		



ST Engineering LeeBoy, Inc. ■ 500 Lincoln County Parkway Extension ■ Lincolnton, NC 28092 ■ 704.966.3300
www.LeeBoy.com

LeeBoy and the LeeBoy logo are registered trademarks of ST Engineering LeeBoy, Inc. Equipment model names, slogans and subsidiary logos appearing in this collateral may be registered trademarks or the trademarks of ST Engineering LeeBoy, Inc. The technical data contained herein is subject to change due to continuous engineering and development. Accordingly, LeeBoy reserves the right to modify at any time. © 2020 ST Engineering LeeBoy, Inc. All rights reserved. BR-1010.11-EN



Contract # 302812-9/L